

# MONTHLY MEMBERSHIP PROGRESS REPORT

District 11 D1

Results as of: 5/31/2024

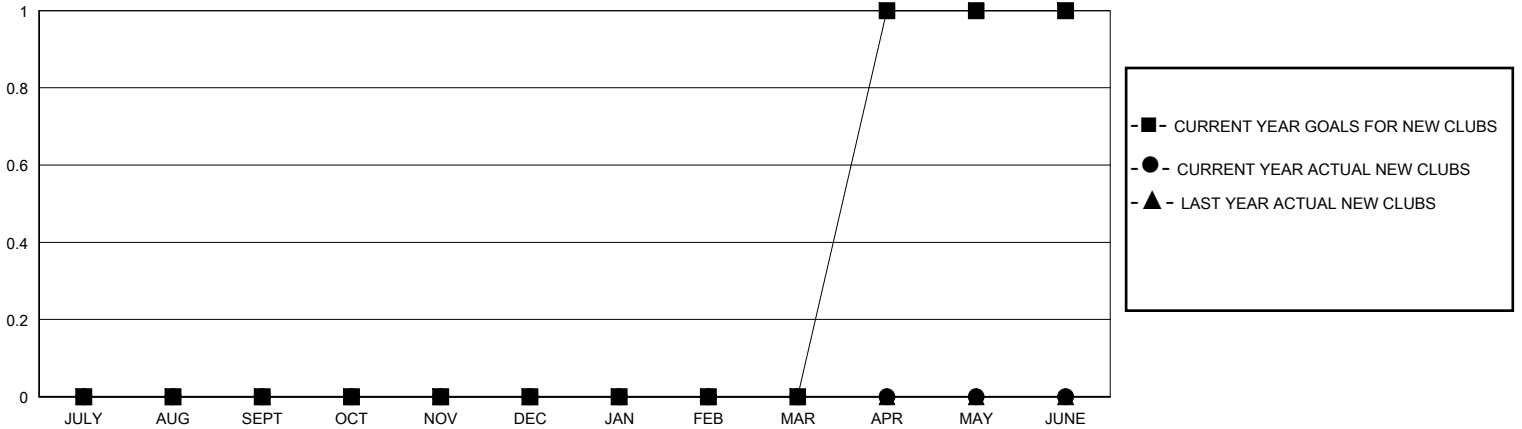
GMT:

LOCATION MICHIGAN

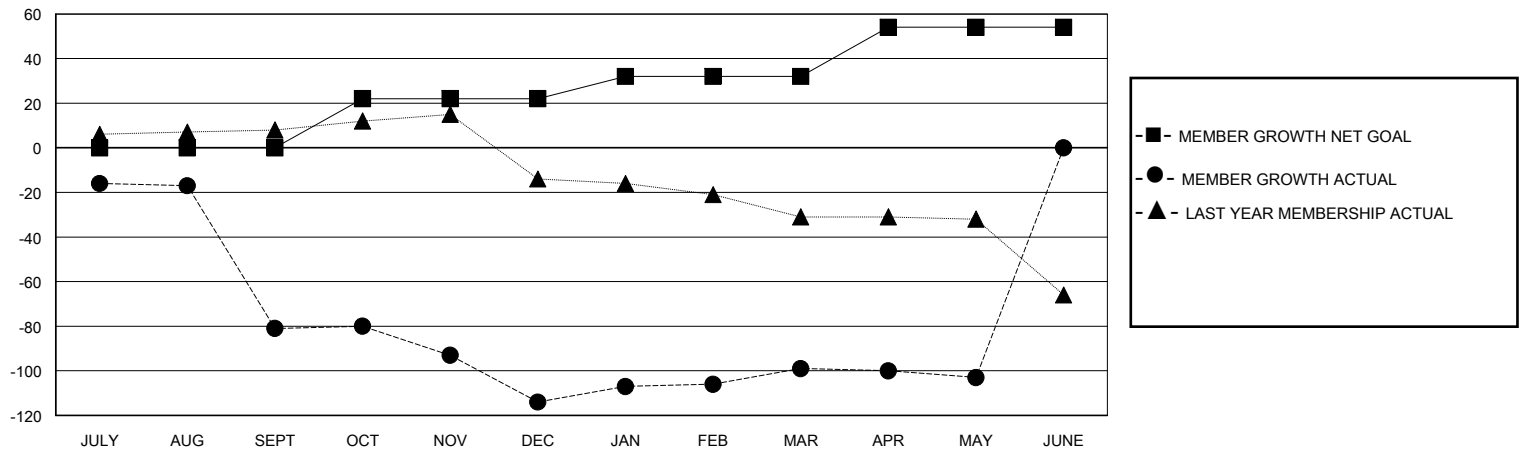
GMT CA

Clubs				Members			
RESULTS FOR 2023-2024				RESULTS FOR 2023-2024			
QUARTER	NEW CLUB GOAL	NEW CLUBS	DROPPED CLUBS	QUARTER	MEMBER GROWTH NET GOAL	MEMBER GROWTH ACTUAL	DROPPED MEMBERS ACTUAL (including transfers)
JULY/AUG/SEPT	0	0	0	JULY/AUG/SEPT	0	39	107
OCT/NOV/DEC	0	0	2	OCT/NOV/DEC	22	16	44
JAN/FEB/MAR	0	0	1	JAN/FEB/MAR	10	36	13
APR/MAY/JUNE	1	0	0	APR/MAY/JUNE	22	9	13

GOALS AND ACTUAL NEW CLUBS CUMULATIVE



GOALS AND ACTUAL MEMBERS CUMULATIVE



<b>DROPPED CLUBS: 3</b>	18 CLUBS OF 37 ADDED 1 OR MORE NEW MEMBERS	<b>GENDER DISTRIBUTION</b>	
		MALE 650 (68.35%) FEMALE 301 (31.65%)	
<b>DROPPED MEMBERS</b>		<a href="#">CLICK HERE FOR CUMULATIVE MEMBERSHIP DATA</a>	TOTAL FAMILY UNIT MEMBERS 225
DECEASED 22 CLUB CANCELLED 15 OTHER 139 <b>TOTAL 176</b>			FAMILY MEMBERS PAYING HALF DUES 115